

# Public Document Pack



**BARRY KEEL**  
Chief Executive  
Floor 1 - Civic Centre  
Plymouth  
PL1 2AA

[www.plymouth.gov.uk/democracy](http://www.plymouth.gov.uk/democracy)

Date 14/02/11 Telephone Enquiries 01752 304570 Fax 01752 304819

Please ask for Amelia Boulter, Democratic Support Officer e-mail [amelia.boulter@plymouth.gov.uk](mailto:amelia.boulter@plymouth.gov.uk)

## **CHILDREN AND YOUNG PEOPLE OVERVIEW AND SCRUTINY PANEL**

**DATE: THURSDAY 24 FEBRUARY 2011**  
**TIME: 10 AM**  
**PLACE: COUNCIL HOUSE (NEXT TO CIVIC CENTRE)**

### **Members –**

Councillor Wildy, Chair  
Councillor Mrs Stephens, Vice Chair  
Councillors Delbridge, Mrs Foster, Haydon, Mrs Nicholson, Roberts, Stark and Tuohy

### **Statutory Co-opted Members -**

Mr K Willis – Parent Governor Representative

### **Co-opted Representatives -**

Alderman Purnell – Co-opted Representative  
Miss K Whittlesea – Young Person Representative  
Miss J Evans – Young Person Representative

### **Substitutes–:**

Any Member other than a Member of the Cabinet may act as a substitute member provided that they do not have a personal and prejudicial interest in the matter under review.

***Members are invited to attend the above meeting to consider the items of business overleaf.***

***Members and Officers are requested to sign the attendance list at the meeting.***

Please note that, unless the Chair agrees, mobile phones should be switched off and speech, video and photographic equipment should not be used during meetings.

**BARRY KEEL**  
**CHIEF EXECUTIVE**

# **CHILDREN AND YOUNG PEOPLE OVERVIEW AND SCRUTINY PANEL**

## **PART I (PUBLIC COMMITTEE)**

### **AGENDA**

#### **1. APOLOGIES**

To receive apologies for non-attendance submitted by Panel Members.

#### **2. DECLARATIONS OF INTEREST**

Members will be asked to make any declarations of interest in respect of items on this agenda.

#### **3. MINUTES (Pages 1 - 8)**

The panel will be asked to confirm the minutes of the meeting on 6 January 2011.

#### **4. CHAIR'S URGENT BUSINESS**

To receive reports on business that, in the opinion of the Chair, should be brought forward for urgent consideration.

#### **5. TRACKING RESOLUTIONS AND FEEDBACK FROM THE OVERVIEW AND SCRUTINY MANAGEMENT BOARD (Pages 9 - 14)**

The panel will monitor progress on previous resolutions and receive any relevant feedback from the Overview and Scrutiny Management Board.

#### **6. LEGISLATIVE CHANGES (Pages 15 - 26)**

To receive an update on legislative changes.

#### **7. CHILDREN AND YOUNG PEOPLE'S PLAN (Pages 27 - 40)**

To review the Children and Young People's Plan.

#### **8. YOUTH PARLIAMENT (Pages 41 - 44)**

To receive a report on the Youth Parliament Elections.

**9. WRITTEN REPORTS:**

- a. Locality Working (Pages 45 – 46)
- b. Stability of Placements (Pages 47 – 48)
- c. Pupil Referral Units (Pages 49 – 50)

**10. WORK PROGRAMME (Pages 51 - 54)**

The Panel will consider its work programme for 2010/11.

**11. EXEMPT BUSINESS**

To consider passing a resolution under Section 100A(4) of the Local Government Act 1972 to exclude the press and public from the meeting for the following item(s) of business on the grounds that it (they) involve the likely disclosure of exempt information as defined in paragraph(s) of Part 1 of Schedule 12A of the Act, as amended by the Freedom of Information Act 2000.

**PART II (PRIVATE COMMITTEE)**

**AGENDA**

**MEMBERS OF THE PUBLIC TO NOTE**

that under the law, the Panel is entitled to consider certain items in private. Members of the public will be asked to leave the meeting when such items are discussed.

NIL.

This page is intentionally left blank

## Children and Young People Overview and Scrutiny Panel

Thursday 6 January 2011

### PRESENT:

Councillor Wildy, in the Chair.

Councillor Mrs Stephens, Vice Chair.

Councillors Browne, Mrs Foster, Haydon, Mrs Nicholson, Roberts and Tuohy.

Co-opted Representatives: Jenny Evans, Kerry Whittlesea and Alderman Pauline Purnell.

Apologies for absence: Councillors Delbridge and Stark and Mr Kevin Willis.

Also in attendance: Claire Oatway – Head of Performance and Quality, Mary Brimson – Head of Service Young People in Care, Maggie Carter – Assistant Director Learner and Family Support, Jayne Gorton – School Organisation and Pupil Access Manager, John Searson – Principle Adviser 0 – 19 Achievement, Heather Ogburn – Primary Adviser, Paul O’Sullivan – Director of Joint Commissioning NHS Plymouth, Cate Simmons – Interim Director of Operations NHS Plymouth.

The meeting started at 10.00 am and finished at 1.05 pm.

*Note: At a future meeting, the committee will consider the accuracy of these draft minutes, so they may be subject to change. Please check the minutes of that meeting to confirm whether these minutes have been amended.*

### 59. DECLARATIONS OF INTEREST

In accordance with the Code of Conduct, the following declarations of interest were made, as follows –

Name		Minute	Reason	Interest
Councillor	Mrs	Minute 64 and 65	Adoption Panel	Personal
Foster			Member	

### 60. MINUTES

Agreed that the minutes of the meeting held on 11 November 2010 were confirmed as a correct record.

### 61. CHAIR’S URGENT BUSINESS

The Chair welcomed Alderman Pauline Purnell as co-opted representative to the Panel.

62. **TRACKING RESOLUTIONS AND FEEDBACK FROM THE OVERVIEW AND SCRUTINY MANAGEMENT BOARD**

Chair gave feedback from the Overview and Scrutiny Management Board to the Panel. It was reported that –

- (a) all actions from the previous Panel meeting were approved;
- (b) Budget Scrutiny is taking place on 12 and 17 January 2011.

63. **QUARTERLY SCRUTINY REPORT**

The Chair handed out to Panel members an amendment to the Quarterly Scrutiny Report. The Quarterly Scrutiny Report was agreed subject to the following changes:

- (a) photos of Panel members to be included in the report;
- (b) a section to be included in the report, 'could we do better'. This section to include the amendments handed out to Panel members. The text in the amendment was unanimously agreed. This section also to include the need to develop clear protocols and workstreams with the Children & Young People's Trust;
- (c) changes to be made to the attendance section of the report to more accurately reflect Panel members attendance at meetings.

64. **OFSTED ANNUAL PERFORMANCE LETTER**

The Chair thanked to the previous Children and Young People Overview and Scrutiny Chair and Cabinet Member for Children and Young People for this achievement.

Agreed that a report be given to the Panel at the next meeting on Pupil Referral Units.

(Order of the agenda moved to facilitate good management of the meeting).

(Councillor Mrs Foster declared a personal interest in the above item).

65. **BUDGET UPDATE**

Mary Brimson, Head of Service Young People in Care gave an update on Independent Foster Placement. It was reported that –

- (a) payment for skills introduced to in-house foster carers to enable more in-house fostering provision;
- (b) a number of strategies were set-up and a resource panel meet regularly to look at alternative ways of providing care;

- (c) reviews take place on all current independent placements to see if care could be brought back in-house.

In response to questions raised, it was reported that –

- (d) £807 is the average weekly cost for independent provision and the average weekly cost of in-house fostering is £200;
- (e) the children that are placed in independent provision have behavioural problems or a complex disability. All options are carefully assessed before a placement is made;
- (f) the commissioning team explores and negotiates the cost with providers, the agreement on placing a child is made by the Assistant Director Children's Social Care and a preferred list of providers used;
- (g) a peninsula wide commissioning process determines the cost of provision across the south west. The peninsular wide commissioning team constantly review the providers looking at value for money, standard of service provider etc;
- (h) the needs of the child are matched with what the residential provider can provide. Social workers regularly visits the establishment to ensure the needs of the child are met;
- (i) placements are not long term and would address the immediate needs of the child. The provider would be able to stabilise the child and address some of the problems to enable the child to move back to in-house provision;
- (j) payment for skills introduced in 2009 to foster carers dealing with children with very complex needs. A recent recruitment campaign proved disappointing and there is a national shortage of foster carers across the country.

Agreed that –

- (1) Independent Foster Placement Costings to be reviewed by the Panel on a regular basis;
- (2) every effort be made to recruit more foster carers. The Chair asked the press for help on this matter.

(Councillor Mrs Foster declared a personal interest in the above item).

66. **SCHOOL TRANSPORT**

Jayne Gorton, School Organisation and Pupil Access Manager updated the Panel on School Transport. It was reported that –

- (a) there has been an increased in the number of passengers requiring assistance with a number of children requiring 1:2 support;
- (b) staffing issues have contributed to the costings;
- (c) ambulances are used to transport children with severe medical needs because they are unable to recruit trained medical staff to escort children by taxi;
- (d) increasing costs for servicing and parts due to the ageing PCC fleet of mini buses.

In response to questions raised it was reported that –

- (e) children that receive free school meals and are in attendance at their nearest school would be provided with transport;
- (f) significant savings would be made on the non- statutory services provided. In terms of future provision there would be no further provision;
- (g) bus companies do have a one zone bus pass and this is a proposal being put forward;
- (h) just over 1000 children receive concessionary fares;
- (i) tender negotiations taking place with procurement for taxis and minibuses;
- (j) greater liaison needed between early years provision and the school transport team. There is a need to look at schooling to minimise the routes.

A minority recommendation made by Councillors Wildy, Haydon and Tuohy that the Concessionary Transport plan regarding removal of concessionary fares from children in receipt of free school meals was rescinded in that this would have a disproportionate affect on low income families. This was not agreed by the whole panel so is a minority recommendation.

Recommended that –

- (1) all proposed actions to be reviewed carefully, prior to implementation;
- (2) a greater deal of liaison required between the early years providers and school transport team;



- (3) the Development Department to ensure that any used mini buses passed onto the school transport team are in good condition, to minimise on-going maintenance costs.

Agreed that –

- (4) costs of sickness absence for school escorts for the past 12 months to be provided to the Panel;
- (5) concessionary transport to be kept under regular review by the Panel.

67. **REPORT ON YOUNG PERSONS ENGAGEMENT WITH SCRUTINY**

The Panel noted the report.

68. **EMOTIONAL WELLBEING AND MENTAL HEALTH STRATEGY**

Paul O’Sullivan, Director of Joint Commissioning and Cate Simmons, Interim Director of Operations, NHS Plymouth gave an update to the Panel on the Emotional Wellbeing and Mental Health Strategy. It was reported that the strategy encourages healthy development of emotional wellbeing from an early age.

In response to questions raised it was reported that –

- (a) the Children Trust findings of Tellus survey reported that children are unhappy. This clearly is not black and white and varies from child to child;
- (b) children across the UK are the unhappiest in Europe;
- (c) the voluntary and community sector is very much engaged with pulling together a network to help deliver the strategy and key services;
- (d) TaMHS (Targeted Mental Health in Schools) is a national pilot funded for 2 years. TaMHS is an area to be supported;
- (e) CAMHS grant is no longer ringfenced but we need to determine what sum is available how the grant is utilised.
- (f) the Chair thanked Paul O’Sullivan and Cate Simmons for their attendance.

Agreed that the Emotional Wellbeing and Mental Health Strategy be kept under review by the Panel.

69. **SPECIAL EDUCATIONAL NEEDS**

Maggie Carter, Assistant Director Learner and Family Support updated the Panel on Special Educational Needs (SEN). It was reported that –

- (a) this is a national indicator we are required to report on;

- (b) in Plymouth time is taken to work with families to get the statement right;
- (c) parents receive support from the Parent Partnership;
- (d) if parents are unhappy with the decision they can take the local authority to a Special Educational Needs and Disability SENDIST tribunal. In Plymouth we have very few because of the approach we use working with parents.

70. **TACKLING BULLYING**

Maggie Carter, Assistant Director Learner and Family Support updated the Panel on Tackling Bullying. It was reported that –

- (a) the bullying strategy group on-going work includes specific training targeted to particular groups;
- (b) with regard to cyber bullying advice given to parents such as new phone and change access to computers. Governor's receive very good training on cyber bullying;
- (c) information on tackling bullying is available in a range of formats;
- (d) CAMHS are they linked into the strategy. It is about developing a child's resilience.

Agreed that –

- (1) a copy of the Anti Bullying Toolkit and Strategy to be put into members rooms;
- (2) at least one copy of the Anti Bullying Toolkit to be available in each school and a list of all outlets of where the toolkit is available.

71. **KEY STAGE 2 ATTAINMENT**

John Searson, Principal Adviser 0 – 19 Achievement and Heather Ogburn, Primary Adviser gave an update to the Panel on Primary Attainment. The Chair reminded members that this had come to the Panel because of concerns raised from the development session over Key Stage 2 Attainment. It was reported that –

- (a) key stage 1 is a top priority;
- (b) 28% of school boycotted the SATs. This has had an affect on the overall key stage 2 figures;
- (c) neighbourhood trends looked at to whether we are narrowing the gap.

In response to questions raised it was reported that –

- (d) a long term strategy is in place to narrow the gap;
- (e) there is uncertainty of where science sits as it is no longer part of the trio. Science is high on our agenda and the LSP Wise Theme group picking up science and technology as part of the on regeneration of the city;
- (f) every child counts funding runs until the end of the summer term, funding will then be paid direct to the schools. We are working with the schools to prioritise the key educational infrastructure essential for moving into the future.

Agreed that –

- (1) neighbourhood data should be used to ensure that resources were targeted towards areas where attainment was below national average;
- (2) the Panel should receive a regular update on progress and milestones of the long term strategy.

72. **UPDATES FROM PARTNER ORGANISATIONS**

The Panel noted the update received from the Corporate Parenting Group.

73. **COMPLIMENTS, CONCERNS AND COMPLAINTS REPORT**

The Panel noted the Compliments, Concerns and Complaints report. If any Panel member has any questions in relation to this report, please email Amelia Boulter, Democratic Support Officer who will forward questions onto the relevant officer.

74. **TASK AND FINISH GROUPS**

- (a) Young Carers in Plymouth

The Chair thanked the panel members that sat on the Young Carers in Plymouth task and finish group.

Agreed that –

- (1) recommendation 12 to include ‘as part of the adult care plan’;
- (2) the Young Carers in Plymouth Report be recommended to the Overview and Scrutiny Management Board.

- (ii) Unaccompanied Asylum Seeking Young People in Care

The Panel were informed that the Unaccompanied Asylum Seeking Young People in Care task and finish group did not take place due to the weather conditions. The Democratic Support Officer would be exploring new dates for January 2011.

75. **WORK PROGRAMME**

The Panel discussed its 2010/11 work programme.

Recommend to the Overview and Scrutiny Management Board that the following items be included on the Children and Young People Overview and Scrutiny Panel work programme:

- (1) Post-16 attainment;
- (2) Pupil Referral Units;
- (3) provisional panel date in April to be moved to March.

76. **EXEMPT BUSINESS**

There were no items of exempt business.

## TRACKING RESOLUTIONS

### Children and Young People Overview and Scrutiny Panel

Date / Minute number	Resolution	Explanation / Minute	Officer	Progress	Target date
15 July 2010 / 19 (6)	Agreed that the panel recommends that Routeways are commissioned to undertake a review of Children and Young People engagement over the autumn, bringing their findings back to the scrutiny panel in January 2011.	Report on Young Persons Engagement with scrutiny.	Claire Oatway (Sarah Heffernan/ Karl Sweeney)	There has been a delay in the commissioning process. However an overview of the scope and quality of CYP engagement over the last two years is appended. In addition key participation representatives have been invited to give a verbal overview to the CYP OSP in January 2010.  A report to comeback to 24.03.11 panel meeting.	24.03.11
11 November 2010 / Minute 48	<u>Agreed</u> that a written report be submitted to the Panel upon the engagement between school governors and third sector organisations regarding the aim for schools to maximise the way in which their facilities are available and accessible to the local community.	Tracking Resolutions and Feedback from the Overview Scrutiny Management Board. Outstanding tracking resolution from Budget Scrutiny Feb 10	Claire Oatway	<ul style="list-style-type: none"> <li>This was raised in city wide governor training in January 2011 – Building Projects – the Governing Body’s involvement.</li> <li>The Governor Development Officer met with Plymouth Association of Governors (PAG) in December 2010 and PAG have pledged their support with an article in the Spring Newsletter.</li> <li>PAG have also included this as an action point in their Action Plan for 2011/12.</li> </ul> <p>This action is now complete.</p>	
11 November 2010 / Minute 52	<u>Agreed</u> that – 1) the Panel support the proposal to transform the Plymouth Hospital and Outreach School to an Alternative Complementary Education (ACE) Service; 2) a report on the ACE provision, including the new support service proposed to replace the Plymouth Hospital and Outreach School, is provided to the Panel in six months time; 3) the Democratic Support Officer email Panel members on the governance of how the current hospital school is organised as well as arrangements for the future.	Hospital School. The Panel receive a report on the proposals to transform the Plymouth Hospital and Outreach School.	Claire Oatway and Amelia Boulter	<p>A report on Alternative Complementary Education provision to come back to the panel in 6 months time;</p> <p>An email to be sent to panel members on the governance of how the current hospital school is organised as well as arrangements for the future.</p> <p>Resolution 3 – briefing note on governance arrangements emailed to panel members 14.02.11.</p> <p>This item has been added to the new work programme for future review.</p> <p>This action is now complete.</p>	<p>June 2011</p> <p>ASAP</p>

Date / Minute number	Resolution	Explanation / Minute	Officer	Progress	Target date
11 November 2010 / Minute 54	<u>Agreed</u> that – 1) a written update on locality working be scheduled into the Work Programme; 2) the paper regarding current restructuring work, proposed delivery and structural models for integrated locality teams is to be submitted to the January 2011 meeting.	Locality Working. The Panel received an update on progress made around integrated locality working with Children and Young People Trust over the last year.	Claire Oatway	Add update on locality working to work programme.  A paper was due to come back to the panel in January 2011. However this item has been deferred to February when more information will be available.  A written update will be provided to the 24.02.11 panel meeting.	24.11.10  Feb 2011
6 January 2011 / Minute 64	<u>Agreed</u> that a report be given to the Panel at the next meeting on Pupil Referral Units.	This item came from a discussion from the Ofsted Annual Performance Letter. The Panel agreed to receive a report at its next meeting.	Claire Oatway	A written report will be provided to the 24.02.11 panel meeting.	24.11.11
6 January 2011 / Minute 65	<u>Agreed</u> that- 1. Independent Foster Placement Costings to be reviewed by the Panel on a regular basis; 2. every effort be made to recruit more foster carers. The Chair asked the press for help on this matter.	As part of the budget update the Panel received an update on independent foster placement costings. It was agreed to keep these costings under regular review.	Claire Oatway	Resolution 2 – Fostering recruitment briefing note emailed to panel members on 14.02.11.  This item has been added to the work programme for further review.  This action is now complete.	

Date / Minute number	Resolution	Explanation / Minute	Officer	Progress	Target date
6 January 2011 / Minute 66	<p><u>Recommended</u> that –</p> <ol style="list-style-type: none"> <li>1. all proposed actions to be reviewed carefully, prior to implementation;</li> <li>2. a greater deal of liaison required between the early years providers and school transport team;</li> <li>3. the Development Department to ensure that any used mini buses passed onto the school transport team are in good condition, to minimise on-going maintenance costs.</li> </ol> <p><u>Agreed</u> that –</p> <ol style="list-style-type: none"> <li>4. costs of sickness absence for school escorts for the past 12 months to be provided to the Panel;</li> <li>5. concessionary transport to be kept under regular review by the Panel.</li> </ol>	School Transport	Claire Oatway	<p>Resolution 4 – A briefing note on sickness costs emailed to panel members on 14.02.11.</p> <p>This item has been added to the work programme for further review.</p>	
6 January 2011 / Minute 68	<u>Agreed</u> that the Emotional Wellbeing and Mental Health Strategy to be kept under review by the Panel.	Emotional Wellbeing and Mental Health Strategy	Claire Oatway	<p>This item has been added to the work programme for further review.</p> <p>This action is now complete.</p>	

Date / Minute number	Resolution	Explanation / Minute	Officer	Progress	Target date
6 January 2011 / Minute 70	<p><u>Agreed</u> that –</p> <ol style="list-style-type: none"> <li>1. a copy of the Anti Bullying Toolkit and Strategy to be out into members rooms;</li> <li>2. at least one copy of the Anti Bullying Toolkit to be available in each school and a list of all outlets of where the toolkit is available.</li> </ol>	Tackling Bullying	Claire Oatway	<ol style="list-style-type: none"> <li>1. Two copies of the Tackling Bullying Strategy and the Anti-Bullying Toolkit are now in the members room.</li> <li>2. The anti-bullying toolkit is being distributed to: <ol style="list-style-type: none"> <li>a. Doctors surgeries</li> <li>b. All pre and after school clubs</li> <li>c. All youth settings</li> <li>d. All schools</li> <li>e. Is featured on the Children and Young People's Trust website, under the Tackling Bullying Strategy - <a href="http://www.plymouth.gov.uk/homepage/socialcareandhealth/childrensocialcare/pcypt/cyptboardandexec/pcyptexec.htm">http://www.plymouth.gov.uk/homepage/socialcareandhealth/childrensocialcare/pcypt/cyptboardandexec/pcyptexec.htm</a></li> </ol> </li> <li>3. Workforce Development courses that incorporate information about bullying include: <ol style="list-style-type: none"> <li>a. Plymouth Safeguarding Children Board specialist courses for Safeguarding and Child Protection available to Plymouth City Council staff: <ol style="list-style-type: none"> <li>1. Introduction to Child Protection (identification of)</li> <li>2. Neglect course (identification and impact of)</li> <li>3. E-Safety course (includes a half day on cyber-bullying)</li> <li>4. Advanced 2 day child protection course (assessment of)</li> <li>5. Supervision for Child Protection (child <i>and</i> adult bullying)</li> <li>6. Domestic Abuse (1 and 2 day courses: bullying as power &amp; control behaviours)</li> </ol> </li> <li>b. Bully Buster training delivered in Schools</li> <li>c. Children's Workforce Development Council four day induction training (presentation about bullying, including signposting to strategy and toolkit).</li> </ol> </li> </ol> <p>This action is now complete.</p>	



Date / Minute number	Resolution	Explanation / Minute	Officer	Progress	Target date
6 January 2011 / Minute 71	<p><u>Agreed</u> that –</p> <ol style="list-style-type: none"> <li>1. neighbourhood data should be used to ensure that resources were targeted towards areas where attainment was below national average;</li> <li>2. the Panel should receive a regular update on progress and milestones of the long term strategy.</li> </ol>	Key Stage 2 Attainment	Claire Oatway	<p>John Searson will bring updates on KS2 attainment to scrutiny in September 2011 and February 2012 (or nearest panel dates). This fits in with the timescales for provisional then validated results data.</p> <p>This item has been added to the work programme.</p> <p>This action is now complete.</p>	
6 January 2011 / Minute 75	<p><u>Recommend</u> to the Overview and Scrutiny Management Board that the following items be included on the Children and Young People Overview and Scrutiny Panel work programme:</p> <ol style="list-style-type: none"> <li>1. Post-16 attainment</li> <li>2. Pupil Referral Units</li> <li>3. provisional panel date in April to be moved to March.</li> </ol>	Work programme items to be submitted to OSMB for approval.		<p>New work item added to the work programme.</p> <p>This action is now complete.</p>	

This page is intentionally left blank

# **The White Paper**

## **Importance of Teaching**

# Greater autonomy for schools



- Schools responsible for their own improvement
- International inspiration - America, Canada, Sweden and Finland
- Charter schools in New York – longer day, stronger discipline, smaller classes
- Academies – every school (eventually)
- No requirement to co-operate with Children's Trusts
- Once excluded pupils cannot be reinstated on Appeal
- But school responsible for finding alternative place
- No SIP for good and outstanding schools
- Outstanding schools to be freed from routine inspection from Sept 2011
- BUT schools can request and pay for an inspection!

# Improved parental choice and power



- Free schools – parents, charities, teachers
- Spare capacity is a good thing
- Sharper and swifter intervention – new floor targets = increase in schools ‘eligible for intervention’
- Financial and performance data for parents on-line
- Parents to trigger an inspection if behaviour issues
- Schools required to have key documentation on-line

# More support for the poorest



- Making opportunity more equal – gap between fee private and state schools has doubled!
- 40/80,000 get to Oxbridge
- Pupil premium – schools held to account for spend
- £110m Early Intervention Fund
- £35m collaboration incentive to tackle gaps
- Children's Centres core role to remain
- End of Contextual Value Added

# Whole system improvement



- School to school support – strong ‘help’ the weak
- Schools free of local interference – NLE/LLE
- Cut and thrust of the market – need for efficiency savings
- Education Endowment Fund (US Race to the Top)
- Deal with poor behaviour
- Chains and multi-school trusts – sponsors ready as is simpler competition process!
- Consult on fairer national funding formula – it will take time
- Replace YPLA with Education Funding Agency (Exec Agency) – fund Academies + Free schools + 16-19
- PRU’s to be independent with voluntary sector to increasingly provide – end LA monopoly

# Assessment



- Assessment at key moments of transition 6, 11, 16
- Lord Bew Review KS2 SATs – end to external marking?
- English Bacc. EN+MA+SC+A or MFL + a humanity
- Optional tests for KS3?
- Scoring spelling, punctuation and grammar in tests



# Greater accountability



- Ofsted – back to a focus on teaching, pupil achievement, leadership and management, and the behaviour and safety of pupils.
- Escalating expectation within floor targets – 60% L4+ in EN+MA plus 2 levels of progress
- Reading test results to figure prominently
- Ofsted to deal with underperformance
- Structural solutions first – Gove’s promise to businesses
- Financial and performance data for parents on-line
- Publish ‘family of schools’ data- identify the best
- Streamlining: capability, performance management
- No time limit on lesson observations
- If low standards 6<sup>th</sup> form funding can be removed

# The New and Improved LA



- LA as ‘parents champion’ – parents not schools choose pupils  
*‘Acting as a champion for parents and families – ensuring that there are enough good schools for every child and, through oversight of the admissions system and by tackling issues such as school transport, that access to schools operates fairly. We also want local authorities to use their mandate to support parents’ and children’s interests more generally – for example, using their existing scrutiny function to challenge performance.’*
- LA as ‘protector of the vulnerable’ – SEN, excluded, LAC
- ‘Blowing the whistle’ on weak schools
- Commissioning new provision – Academy/Free School as first option

## LA Role



*‘Acting as a champion for educational excellence – working both with the local family of schools and with individual schools to ensure good and improving performance. Local authorities should challenge and support **all** schools in their area to deliver excellence. They will bring people together to tackle local problems, and broker school to school support to drive improvement’.*

# LA Role



- Support structural transformation for below floor schools to improve fast or transform
- LA to source sponsor – but Secretary of State will if needed
- Academy sponsors can be replaced too (By DfE)
- Create local arrangements for admissions
- Link selection to regeneration and aspirations
- Appoint a DfE funded 'Lead Adviser' on school improvement and transformations
- Can widely trade school improvement services
- LA could trigger inspection in Academy/Free schools
- Safeguarding

## LA Role



*‘For the immediate future, the majority of schools will remain as local authority maintained schools and their funding will be routed through local authorities. But we anticipate that, as Academy status becomes the norm, local authorities will increasingly move to a strategic commissioning and oversight role’.*

# Opportunities and threats



- Build on Plymouth's excellent reputation – NCSL, DfE....
- Heads could play civic leadership role
- Collective responsibility across Plymouth
- Build on strong collaborative history
- Vertical federations and all through 0-19
- Restructure to meet core responsibilities including city aspirations
- Responsibility for school improvement remains
- Likely to provide a 'patch adviser' role
- We will provide or broker what schools want
- Work with neighbouring LAs but be Plymouth centric
- Work with schools to define essential educational infrastructure

**PLYMOUTH CHILDREN AND YOUNG PEOPLE'S  
PLAN 2011-2014:  
CONSULTATION DOCUMENT**

This consultation document contains a retrospective look at progress from the Children and Young People's Trust, and a forward look to our priorities for the next three years.

Your views are really important in shaping the content of the Children and Young People's Plan 2011-14. Some important areas that are essential to improving outcomes for children and young people are not included in these priorities because they are already important to how we work on a day to day basis. For example, meeting the additional needs of children with disabilities, involving children and families in decision making, or jointly commissioning services.

If you've got ideas on those cross-cutting areas we'd love to hear them, but don't worry that you haven't seen them in this consultation document.

**PLYMOUTH CHILDREN AND YOUNG PEOPLE'S  
PLAN 2011-2014:  
CONSULTATION DOCUMENT**



## **Introduction**

Across the Plymouth Children and Young People's Trust we recognise that each of us comes to work every day to make a difference to the lives of the children and young people of Plymouth. Our projects, in all parts of the City, provide much needed support to children, young people and families as we work to enable every child to live, grow, achieve and exceed in their hopes for the future.

Over the last three years, we have worked together with colleagues new and old, and have learned and grown alongside each other. We have faced challenges shoulder to shoulder and have been rewarded and celebrated by our peers. Ofsted's good rating following our announced inspection in 2010 is the most recent landmark. We have proved that we understand the families we work with and with rigour and passion we do all that we can to help families be all that they can.

Nationally, we have been given guidance that Children's Trust arrangements are no longer mandatory. However, the Trust Board have made a collective decision to continue to work together to make a difference. This three year plan will give us the direction we need to keep us moving together in the right direction, and will help us to show that we are listening and responding to what children, young people and parents are telling us.

This plan demonstrates how we will deliver Plymouth 2020 priority outcomes for children and young people. This isn't the end of our commitment to making Plymouth one of Europe's finest most vibrant waterfront cities where an outstanding quality of life is enjoyed by everyone. Many of our teams can help to achieve that vision for the City and we must all play our part. Similarly we will work alongside new partners from across the City to co-ordinate our actions to have the greatest impact.

We must acknowledge that this plan will also take us through some tough times where partners will change and our collective purse tightens. Our advantage though is that we already know that working together helps us to do more than we ever could alone.

Together we will continue to share our expertise. We will continue to work with children, young people and families to provide the services they need. We will continue to enable every child to have the childhood that they deserve.

**Cllr Mrs Joan Watkins**  
**Chair of Plymouth Children and Young People's Trust Board**



## What we have achieved so far

Delivery of the 2008-2011 Children and Young People's Plan has been a huge success. Here is a snapshot of our partnership work over the past three years!

### BE HEALTHY

**WE SAID WE WOULD: Reduce health inequalities** because we know that across the city there are big differences between health outcomes depending on the circumstances, such as deprivation. 41% of children and young people in Plymouth live in the most deprived neighbourhoods.

#### WE HAVE –

- Rolled out the **'Healthy Schools'** programme across the City - 97% of schools now take part, with 53% also engaged in the **'Healthy Schools Plus'**, focusing on specific issues such as mental health, obesity and sexual health.
- Ensured that the **Great Expectations** antenatal programme is delivered through all our Children's Centres in partnership with Midwives, Health Visitors and Mental Health Workers.
- Promoted healthy eating and cooking in schools and across communities - we hosted **'Ready Steady Cook'** style events and helped set up allotment projects to grow fresh produce. This has helped to raise awareness about the importance of healthy eating, although work is still needed to encourage further take up of Free School Meals!
- Successfully introduced an **'Opt Out'** scheme to help expectant mothers and fathers to stop smoking before the birth of their child.
- Extended breastfeeding peer support training across the City – there are now 14 'Latch On' support groups providing early breastfeeding support to mothers.

**WE SAID WE WOULD – Improve children and young people's mental health**, as we know one in four children and young people will experience emotional or mental health problems at some time during their childhood.

#### WE HAVE –

- Reorganised the way in which we provide mental health services for children, young people and their families. This now includes a new community based outreach team as well as dedicated teams for children in care, children with a disability and young offenders.
- Implemented a multi agency pilot project to deliver schools based mental health support to children and young people – this has involved training of school staff, co-location of Primary Mental Health Workers within schools, and partnership working across agencies including Educational Psychologists, Parent Support Advisors and Learning Mentors.
- Developed a pathway to support mothers and their babies, including early identification and treatment of post natal depression.
- Started a groundbreaking pilot project to address the stigma associated with mental health problems, through young person led participation activities.

## STAY SAFE

**WE SAID WE WOULD – Reduce bullying across the city,** because children and young people have stated that bullying is a key concern to them, and a barrier to them feeling secure, happy and able to get on with life.

### WE HAVE –

- Launched a city wide, multi agency **‘Tackling Bullying Together’** Strategy, along with a practical toolkit to support anyone working with children and young people who may need support and guidance around bullying behaviours.
- Provided training and held awareness raising events to tackle **cyber bullying**. Plymouth’s Safer Internet Day included online safety videos and training delivered to 400 young people aged 9-10yrs on cyberbullying.
- Continued to roll out the Bully Busters initiative through four primary schools and a community youth group to raise awareness and empower young people to deal with bully behaviour themselves. While we have seen a reduction in bullying in line with the national trend, locally we have seen a rise in children and young people worrying about bullying – this is likely due to the work being undertaken to raise the profile of bullying across the city.
- Developed an Online Safety Toolkit for early years settings, which was launched locally by Childcare expert and TV presenter Dr. Tanya Byron because she was so impressed with it.

**WE SAID WE WOULD - Continue to strengthen safeguarding services,** as these are critical to protect some of the most vulnerable children and young people across the city.

### WE HAVE –

- Ensured that 100% of child protection cases are reviewed on time. Work needs to continue in this area to maintain this high standard.
- Established a full multi-agency child protection training programme run by the Plymouth Safeguarding Children’s Board.
- Launched the **Plymouth Pledge** for our children in care, outlining what we have pledged to do as part of our Corporate Parenting role.
- Increased the skills of Foster Carers through introduction of the Payment for Skills scheme, which is a career ladder with four payment levels. Foster Carers can progress through the levels as they develop their skills and care for children with more complex needs.

**WE SAID WE WOULD – Reduce children and young people’s unintentional accidents and injuries** across the city. Road accidents and accidental poisonings remain an area of concern in Plymouth, and we also know there is a relationship between deprivation and accidents, particularly in the home.

**WE HAVE –**

- Rolled out the **‘Safe at Home’** project to families in the more deprived areas of the City. Delivered through Children’s Centres in partnership with health, police and the fire service, this project has helped 657 families so far. Nearly two thousand families in total have also received additional education around various aspects of safety in the home.
- Worked across the Trust to deliver awareness and educational events around accident prevention, such as **Junior Life Skills** aimed at 10-11 year olds, which showcases a range of risk scenarios, including electrical safety, fire safety and water safety. The annual **Learn to Live Event** is aimed at emerging drivers and passengers and promotes safety on the roads.

## ENJOY AND ACHIEVE

**WE SAID WE WOULD – Enable children and young people to have fun** as they told us there was not enough focus on ‘enjoying’.

### WE HAVE –

- Rolled out the **‘Summer Mix’** programme to young people 11 to 19yrs, which offers 86 different fun and educational accredited course for free. 1044 young people enrolled to attend a course in 2010.
- Established the Allsortz package of services in and around schools to enable disadvantaged children and young people to access activities that they would not otherwise be able to afford.
- Installed Play Pods in five primary schools to raise the profile of the importance of play in schools during break times.
- Introduced free access to Council leisure facilities for children in care. Activities available include swimming, badminton, squash and access to gym facilities.
- Enabled disabled children and young people to access mainstream leisure activities and holiday clubs including sailing, outdoor adventure, music, theatre and dance.

**WE SAID WE WOULD – Improve attainment, particularly in Maths and English at all stages**, as we know that children and young people want to learn and achieve in the current economic climate, and are aware of the increased competition for employment.

### WE HAVE –

- Built and opened three new primary schools, as well as established two academies.
- Established a virtual school for children in care with their own virtual head teacher. In 2009, our highest ever attainment results for these young people were achieved.
- Developed an integrated curriculum across primary and secondary schools in response to young people asking for more active lessons e.g. outdoor learning.
- We have significantly narrowed the gap between students who gain 5 or more A\*-C GCSEs (including English and Maths) in more deprived neighbourhoods compared to more affluent neighbourhoods.
- The number of schools that do not achieve national targets for young people 14-16yrs has reduced significantly.
- Enabled **‘Stories in the City’**, to raise awareness of the importance of reading by linking up community and commercial groups with primary schools across the City. In 2010, over 40 venues hosted story times for pupils aged 5-11yrs.

## MAKE A POSITIVE CONTRIBUTION

**WE SAID WE WOULD – Reduce risk taking behaviours, such as substance misuse, unprotected sex and criminal activities,** as all three issues remain a major concern for us in the City.

### WE HAVE –

- Made real steps to reduce the numbers of teenage pregnancies, but we are still above the national average and need to continue our work with young people. This includes the roll out of **‘clinic in a box’** in youth centres as well as a dedicated young person’s sexual health clinic.
- Set up **‘Streetwise’** - where Youth Workers team up with the police and other Council services to identify young people who are causing concern within the community. The project offers activities such as football and break-dancing, but also has an enforcement aspect.
- Launched **‘Operation Stay Safe’** – to protect young people who are out on the streets late at night and who are at risk of becoming victims of crime, or of being drawn into criminal behaviour.
- Significantly improved access to specialist drug and alcohol treatment for young people.
- Reduced the number of young people who are entering the criminal justice system for the first time.

**WE SAID WE WOULD – Improve opportunities for young people to make a positive contribution,** as we want to ensure that children and young people are positively involved at all levels in developing both their own futures and the future of the City.

### WE HAVE –

- Increased opportunities for children and young people to become more involved in decision making, such as the Equal Voices project, Youth Council, Listen and Care Council and locality youth forums.
- Implemented **‘Hear by Right’**, to help services follow best practice on the safe, sound and sustainable participation of children and young people.
- Engaged with parents through the Plymouth Parent Partnership, including Parent Support Advisors who are attached to every school in the City and provide advice and support to parents.
- Enabled young people aged 13-19yrs to successfully use the £300,000 annual youth opportunity and capital fund to apply for projects under ‘places to go’ and ‘things to do’.

## ACHIEVE ECONOMIC WELL-BEING

**WE SAID WE WOULD – Raise young people’s aspirations, with particular support for young people who are not in education, employment or training,** as we want to ensure they have the skills and tools they need to achieve their own potential.

### WE HAVE –

- Launched the **Children’s University** and roll out has begun in two localities. To date, over 500 passports have been requested.
- Developed a ‘Plymouth Promise’ for young people which outlines a set of key entitlements, such as ‘Have access to residential experience’ and ‘Be offered the opportunity to help others through voluntary activity’ for all children and young people in the City.
- Nearly finished our Career Related Pathfinder pilot for children aged 7-11, which includes a range of career related learning activities.
- Guided the majority of our care leavers to ensure that they are in education, employment or training when they turn 19.

## What we will do over the next three years

The Plymouth Plan, endorsed by Plymouth2020, creates four shared priority areas for the City. Many of the Children and Young People’s Trust partners will have a part to play in delivering that through:

- **Delivering Growth:** Developing Plymouth as a thriving growth centre by creating the conditions for investment in quality homes, jobs and infrastructure
- **Raising Aspiration:** Promoting Plymouth and encouraging people to aim higher and take pride in the City
- **Reducing Inequality:** Reducing the inequality gap, particularly in health, between communities
- **Providing Value for communities:** Working together to maximise resources to benefit customers and make internal efficiencies

For example, schools will have a part to play in increasing the overall satisfaction with the local area, GPs can contribute by increasing the value of goods and services that they buy from civil society organisations, youth groups can help achieve recycling targets.

This Children and Young People’s Plan 2011-14 describes how agencies in the Children and Young People’s Trust will work together to achieve the children and young people related outcomes from the Plymouth Plan. It will build on the work undertaken over the last three years, and covers services for all children and young people in Plymouth aged 0-18, as well as:

- Young people who are care leavers and aged 19 or over
- Young people up to the age of 25 with a disability

This plan outlines the direction of travel for the Children and Young People’s Trust for the next three years. Its priorities, presented within this section, have been identified based on the Plymouth Report which looked at the needs of the city combined with more detailed understanding of needs and the shared learning over the past three years.

This plan aims to take the Trust’s partnership work to the next level, by addressing the priority issues and areas of need that require our collective attention. In line with the Government’s overall vision to "help children achieve more", our priorities for 2011-2014 show how we will continue to work together to further improve outcomes for our children, young people and families in Plymouth.

2020 Priority	CYPP 2011- 2014 Priority	What we propose to do
<b>Reduce inequalities</b>	<b>1. Tackle child poverty</b>	<p>1.1 Remove barriers to work e.g. childcare, skills.</p> <p>1.2 Maximise income for families most affected by the economic situation e.g. take up of in-work benefits, tax credits and free school meals, and access to money and debt advice.</p> <p>1.3 Improve access to decent homes for families e.g. fuel poverty, mortgage rescue, reduce temp housing.</p> <p>1.4 Improve young people's ability to manage finances sensibly.</p>
	<p>Reducing inequalities across the City is a concern for all partners. Tackling child poverty and its impact has been named as a top priority. Many partners have an important role in reducing child poverty by supporting more families into work and by breaking the generational cycles of worklessness.</p> <p>The effects of inequality and deprivation have been felt across all services working with children, young people and families. In the last Children and Young People's Plan, many of our priorities - improving attainment, raising aspirations and reducing health inequalities - were closely related to child poverty.</p> <p>We responded by targeting some of our key services in the most deprived localities, by opening up free leisure opportunities and delivering the Plymouth Promise to our young people, by providing subsidized holiday clubs and child care across the City, and by focusing on getting young people most at risk of poverty into education, employment or training – such as young parents, disabled young people or young offenders. With reduced grant settlements we may not be able to offer the same level of support.</p> <p>Our response has had an impact on those we have reached, but we know that child poverty is a societal issue that requires a broader societal approach. In response to the Government's call to eliminate child poverty by 2020, we will now join forces across partnerships in the City to tackle the root causes of poverty together, and reduce its effects on families. This will mean linking to other priority areas, including the new Housing Strategy and helping parents back into work, including better paid employment through childcare.</p>	

2020 Priority	CYPP 2011- 2014 Priority	What we propose to do
<b>Reduce inequalities</b>	<b>2. Provide all children with the best possible start to life</b>	<p>2.1 Improve the physical and mental health and wellbeing of children and young people.</p> <p>2.2 Strengthen multi-agency child protection across the City.</p> <p>2.3 Provide early support for young people and families with multiple problems, with an emphasis on hidden harm and domestic abuse.</p>
		<p>The other key element of reducing inequalities is the focus on health inequalities for all ages. Partners can have a positive impact on the health and wellbeing of children and their families, for example offering family exercise or cooking classes or promoting smoking cessation. Helping families with multiple problems such as substance or alcohol misuse or domestic abuse does have a positive long term impact on the health of the City's population.</p> <p>Providing a solid foundation for any child or young person is essential to enable them to fulfil their potential. Within the last plan, we recognised that addressing health issues early in childhood can improve their outcomes later in life, and significant strides have been taken to improve our children and young people's health.</p> <p>The Trust has invested heavily through community based settings such as Children's Centres and schools to promote healthier lifestyles, such as healthy eating, smoking cessation, specialist support for children with complex needs, and mental health support to address post natal depression or to deal with the grief associated with losing a parent.</p> <p>The Trust was praised for its work during Ofsted's safeguarding inspection, demonstrating our continued improvements to child protection. We have strived to ensure our children in care achieve well at school, experience good health and receive the quality of care and support expected as part of our Corporate Parenting role. Keeping children safe is at the heart of all we do and we will not let our standards slip.</p> <p>We know we must do more to enable families at an earlier stage to manage their problems before they become too big and complex. Domestic abuse and hidden harm continue to be a key concern across the City and we need to address these urgently in order to keep children safe within their families.</p> <p>In the background, health services are radically transforming with spending power reducing and moving to GP practices. It is vital that we support these new partners to play a full part in the thriving Children and Young People's Trust.</p>



2020 Priority	CYPP 2011- 2014 Priority	What we propose to do
<b>Raise aspirations</b>	<b>3. Improve levels of achievement for all children and young people</b>	<p>3.1 Improve educational achievement levels, particularly in Maths and English.</p> <p>3.2 Improve the educational achievement of vulnerable groups.</p> <p>3.3 Build self confidence and promote the well-being of children and young people.</p>
	<p>Plymouth's Aspiration theme relates to promoting Plymouth, encouraging people to aim higher and to take pride in the City. All partners can support this work by inspiring and encouraging children and their families to raise their sights or by physically improving their local environments or perhaps taking part in one of the many major sporting or cultural events in the City.</p> <p>Achievement can mean different things to children and young people. It can mean overcoming a personal hurdle, or reaching a goal, be it passing an exam or learning a new skill. Whatever the achievement, it gives children and young people a sense of pride, and provides the confidence they need to push further.</p> <p>There are close links between aspirations and achievement, and both are linked with issues such as poverty, parental attitudes, health and even gender. We have come a long way over the last three years to raise the aspirations and achievement levels of our children and young people. We have built new schools, refurbished others and created a virtual school for our children in care. We continue to promote reading across primary schools, have redesigned the curriculum to make lessons more active and inspirational, and have significantly raised attainment in those schools serving the most deprived localities. In terms of primary schools we recognise that there are still challenges to overcome.</p> <p>We have also learnt that we need to sustain such achievements, and focus on those areas that still require our partnership approach. This will be more important because the Academies Agenda and changes to funding settlements have put more emphasis on schools to deliver and commission services to improve achievement. Partners need to continue to work together to support children's learning. We know that when children and young people are confident and have self belief, they are much more able to achieve so we will continue to support anti-bullying initiatives and make sure that children have appropriate adults they can talk to if they have a problem. There are some key groups who, despite our collective efforts so far, still struggle to achieve at school, for example boys, and we must look at how we can support them. There are also children who excel, and who deserve the inspiration and support to help them achieve their goals too.</p> <p>Services can also play an important role in improving skills and achievement for all ages, for example through family learning.</p>	

2020 Priority	CYPP 2011- 2014 Priority	What we propose to do
<b>Deliver growth</b>	<b>4. Equip young people with skills, knowledge and opportunities to make a successful transition to adulthood</b>	<p>4.1 Maximise engagement opportunities with employers, especially for vulnerable 14-19 year olds.</p> <p>4.2 Develop high quality apprenticeships for young people.</p> <p>4.3 Extend opportunities for young people to develop employability skills in science, technology, engineering and mathematics.</p> <p>4.4 Encourage entrepreneurial aspirations among young people.</p> <p>4.5 Excite and prepare young people for transitions, particularly the transition to secondary school, and from children's to adult's services.</p>
		<p>Across the City the Growth Agenda seeks to develop Plymouth as a thriving growth centre with an emphasis on increasing the number of jobs, better wages and better connectivity with key markets. All partners can contribute to this area by promoting local businesses, offering suitable childcare, and helping families into work.</p> <p>For many young people, the road towards adulthood is lined with milestones to achieve and hurdles needing to be overcome plus there is a raft of emotional and physical changes to be dealt with. Over the past three years, we have given young people a great start by raising attainment levels across the City at all ages, and helping more young people to find employment or further education/training opportunities.</p> <p>We recognise however that in the current financial climate, and faced with rising unemployment levels, we must respond as a partnership to ensure that young people are well prepared and equipped for the world that awaits them. This includes matching of skills to what the job markets need, encouraging young people to set up their own small business, and equipping young people with the ability to manage finances and to know how they will need to become independent and self sufficient. We will work alongside other citywide partnerships such as Wealthy and Wise theme groups to help them meet their goals. This is a priority area where Central Government spending has been cut, with reduced peninsular-wide investment in services like Careers South West.</p> <p>Some young people will find it hard to make the journey to adulthood, and while we have taken significant steps to improve our services for those over 16yrs, particularly for those with a disability or mental health problem, we know many are still struggling once they are no longer considered as a child at the age of 18.</p>

2020 Priority	CYPP 2011- 2014 Priority	What we propose to do
<b>Provide value for communities</b>	<b>5. Tackle risk taking behaviours through locality delivered services</b>	<p>5.1 Deliver intensive youth support to meet the needs of vulnerable young people aged 11-19yrs.</p> <p>5.2 Promote citizenship and volunteering opportunities</p> <p>5.3 Enable young people to take responsibility and to make safe and informed decisions through the provision of timely and appropriate information and guidance.</p>
	<p>Providing value for communities is about maximising the resources – cash, assets and skills in the city and making efficiencies. Partners will be supporting this in every priority area by offering the most efficient and effective services, listening to our communities and considering areas where we can share resources. For example, the Fire Service has made small changes to how it does Home Safety checks to tackle the problem of accidental poisoning or injuries in the home.</p> <p>We are reorganising services around a locality-based model in order to tailor support to need in the community. This provides a closer link to neighbourhoods and an opportunity for partners to hear the views of residents more directly, for example we know that anti-social behaviour and young people not having enough to do are regularly voiced as concerns.</p> <p>Another key area is to provide early intervention in those areas that damage young people's life chances and ultimately cost the state more in the long run. In the last three years we have made significant progress in reducing our teenage conception rate and tackling substance misuse. However, our performance indicators and needs assessment show that we now need to target our interventions more closely, more intensely and at an earlier stage at young people most at risk.</p> <p>Across the Trust we recognise the main areas of harmful risk for this City, and will focus on addressing these in particular – alcohol, repeat offending and anti social behaviour. We understand that by focusing on these we will also be able to tackle other risk taking behaviours as well.</p>	

This page is intentionally left blank

**Children and Young People Overview & Scrutiny Panel****24 February 2011****Youth Parliament****UKYP Election report 2011**

- A recommendation was made by scrutiny to hold elections in schools.
- Implications for the Youth Service – budget, staffing, resources for campaigning.
- The options: A pilot in three schools or all schools at once.
- Decision made to cover all schools with any issues arising to inform 2012 election.
- Letters sent to all secondary schools, special schools and further education colleges in the city (30 in total) on behalf of Councillor Watkins, Councillor Wildy and John Miller, Head of Integrated Youth Support Services. Letter detailed intention to run elections in schools on Monday 24<sup>th</sup> and Tuesday 25<sup>th</sup> January during the school's lunch time.
- Election packs sent out to schools – posters, campaigns etc.
- Youth workers from each locality team arrived on the day with ballot boxes and voting slips.
- Main Election Day Saturday 29<sup>th</sup> January. For anyone who missed the elections at their school.

22 Schools and Colleges from Plymouth took part in the school balloting with 1707 young people voting. This is triple last year's figure. As young people can vote for either 1 or 2 candidates, there were a total of 3069 votes cast.

Schools across the city used different methods to engage their students in the balloting, from displaying the posters to putting on workshops looking at the candidates' campaigns in depth. This meant that the number of young people voting within schools ranged from 6 to 212.

**The 2011 Members of Youth Parliament are:**

Kieron Bhuyia - Lipson Community College  
Emily Carter - Plymouth High School for Girls

**The 2011 Deputy Members of Youth Parliament are:**

Matthew Currie - Sir John Hunt  
Lucy Fowell - Notre Dame

**Breakdown of number of young people voting**

School / College	Number of young people voting
ACE	No response
All Saints Academy Plymouth	84
Brook Green Centre for Learning	85
City College – Goschen Centre	25
City College – Kings Road	32
Coombe Dean	63
Devonport High School for Boys	38
Devonport High School for Girls	88
Downham Special School	No response
Eggbuckland Community College	56
Hele's	37
Lipson Community College	212
Longcause Community Special School	No response
Marine Academy Plymouth	Declined to participate
Millford Community Special School	No response
Mount Tamar School	Taking part next year
Notre Dame Roman Catholic School	114
Plymouth College	8
Plymouth College of Art	7
Plymouth High School for Girls	89
Plymouth Hospital and Outreach School	7
Plymstock School	74
Ridgeway School	40
Sir John Hunt Sports Community College	189
St. Boniface's Roman Catholic College	39
Stoke Damerel Community College	117
Tor Bridge High School	20
Woodlands School	No response

**Total of pupils voting in schools = 1424**

**Total of young people voting at Saturdays event = 283**

### **Future considerations**

Current resources will be reviewed to support increased participation in the Youth Parliament elections in schools.

Further support from elected members will be explored to assist in securing funding, through local sponsorship, to enable MYPs to experience budget management and community project development.

### **Multi-Youth Forum Event**

The 2011 MYPs will be taking part in a city wide debate with members of youth forums from across the city. Young people will look at issues raised in the 2011 campaigns, as well as other key issues identified by the forums. The event will be held at the Council House on Saturday March 19<sup>th</sup> (2pm til 5pm) hosted by the Youth Service and the Zone.

John Miller  
Head of Integrated Youth Support Services  
Services for Children & Young People

This page is intentionally left blank



## **Progress Update on Locality Working**

### **Report for C&YP Overview & Scrutiny Panel February 2011**



At Scrutiny Panel in November 2010 a report on Locality Working in Services for Children and Young People was presented, which noted that work was underway on proposals for restructuring within Services for Children and Young People to support integrated Locality Working.

These proposals are in the process of consideration by Department Management Team in the light of the budget position and the changing landscape.

At its meeting in December 2010 the Children and Young People's Trust Board reaffirmed its commitment to locality working.

**Maggie Carter**

Assistant Director, Learner & Family Support

This page is intentionally left blank

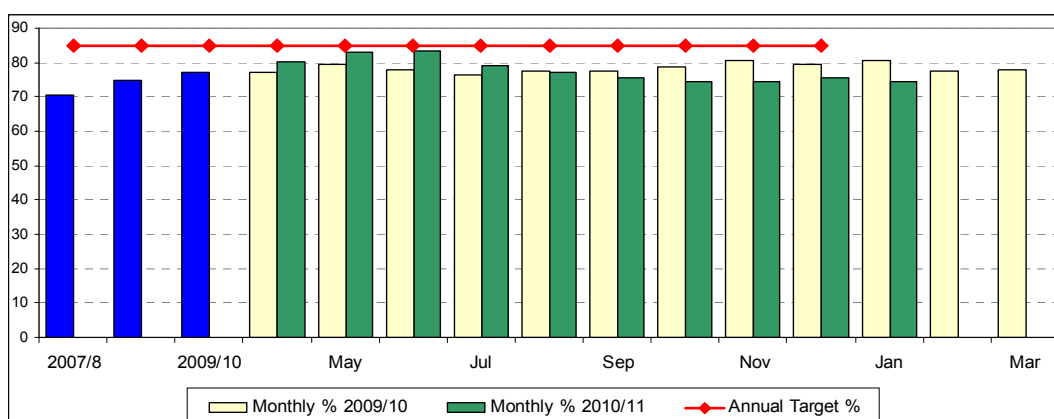
**Children and Young People Overview and Scrutiny Panel**  
**24 February 2011**  
**Placement Stability**

**Introduction**

There are 2 measures of for placement stability:

- i) Percentage of children in care for 2.5 years who have been in the same placement for 2 years or more.
- ii) Percentage of children in care having 3 or more placements within a year
  - Plymouth's performance in relation to long term stability is good in comparison to our statistical neighbours.

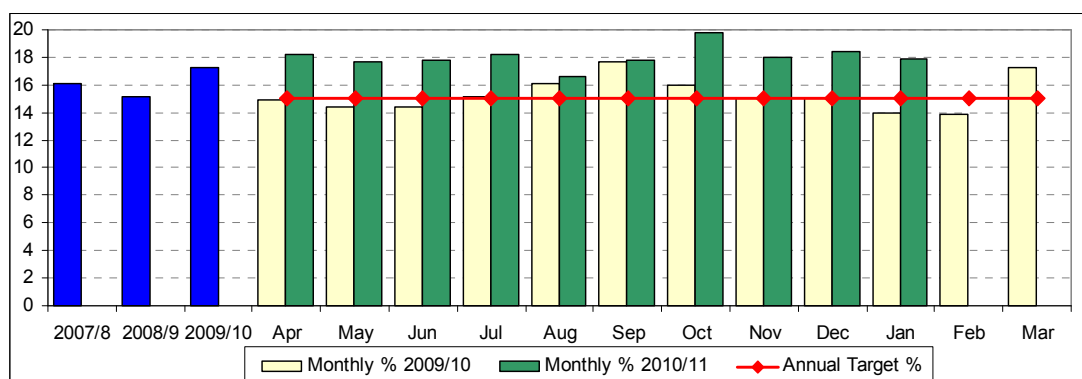
	2007/8	2008/9	2009/10	Apr	May	Jun	Jul	Aug	Sep	Oct	Nov	Dec	Jan	Feb	Mar
Monthly % 2009/10	70.5	74.7	77.0	77.2	79.3	77.8	76.3	77.4	77.5	78.8	80.7	79.4	80.6	77.7	78.1
Monthly % 2010/11				80.1	82.8	83.5	79.2	77.0	75.7	74.6	74.6	75.4	74.6		
Annual Target %				85.0	85.0	85.0	85.0	85.0	85.0	85.0	85.0	85.0	85.0	85.0	85.0



	2003/4	2004/5	2005/6	2006/7	2007/8	2008/9	2009/10
Plymouth %	67.9	65.2	68.6	68.1	70.5	74.7	74.1
SN Comparator %	61.6	61.3	66.1	66.7	64.6	68.5	70.9
England %	64.3	63.0	64.8	65.9	66.5	66.4	68.1
Annual target %				55.0	65.0	75.0	85.0

- Plymouth's performance in relation to children experiencing 3 or more placement moves is less favourable.

	2007/8	2008/9	2009/10	Apr	May	Jun	Jul	Aug	Sep	Oct	Nov	Dec	Jan	Feb	Mar
Monthly % 2009/10	16.1	15.1	17.2	14.9	14.4	14.4	15.1	16.1	17.7	16.0	15.0	15.0	14.0	13.9	17.3
Monthly % 2010/11				18.2	17.7	17.8	18.2	16.6	17.8	19.8	18.0	18.4	17.9		
Annual Target %				15	15	15	15	15	15	15	15	15	15	15	15



	2004/5	2005/6	2006/7	2007/8	2008/9	2009/10
Plymouth %	15.7	18.0	16.4	16.1	15.1	17.2
SN Comparator %	14.1	12.0	14.0	13.0	10.1	11.3
England %	13.1	12.0	12.0	11.0	10.4	10.9
<b>Annual target %</b>	<b>14</b>	<b>16</b>	<b>15</b>	<b>15</b>	<b>13</b>	<b>11</b>

### **Analysis of Data**

An analysis of data was undertaken on 2 February 2011 and the following points were identified:

- Some placement moves reflect positive care planning decisions eg reunification or permanency/adoption.
- The stability performance for children under 16 compares favourably with comparator authorities sharing 11.1% and 13.4% in the last 2 quarters of 2010/11.
- Data for young people over 16 still shows instability. This is understood to be due to the numbers accommodated following the Southwark judgement and the youth homelessness protocol which had 3 placement moves built into it. That protocol has changed and together with lower numbers of young people being accommodated performance will improve.
- Under 5 age group experience 3 + placement moves whilst remaining living with their birth parent as part of the parent and child assessment and care planning within court proceedings.
- The data also includes children who go missing for over 24 hours. Both young people were returned to their placements safely but such episodes count as placements moves.

### **Action Plan**

- Managers analyse placement moves on a monthly basis so we know the reasons for placement moves
- Work is being undertaken through foster carer recruitment and refining matching processes

**Mary Brimson**

**Head of Service – Children & Young People in Care**

# Update on PRU Progress Report

## C&YP Overview & Scrutiny Panel

### 24 February 2011



#### 1. Service Developments

- Following the last inspection, the PRU Service has been restructured and from September 2010 the Key Stage 2/3 and Key Stage 4 provisions have merged to form the Alternative Complementary Education (ACE) Service, under a new management team. The Headteacher, Mrs S Gillett and Deputy, Mr C Humphries, were recruited externally following a national recruitment campaign and the management team has been reconfigured.
- The four Key Stages are housed in separate bases and each base has a Head of Key Stage who are part of the Senior Management Team.
- A new Management Committee has been established (see report on ACE Governance)

#### 2. Improvements to Date

##### 2a. Attendance of pupils - improved

- Overall attendance has increased by 25% across the service.

##### 2b. Staff sickness – improved

- Staff sickness absence has decreased by 98% on the last academic year.

##### 2c. Improved curriculum offer to pupils

- Existing relationships with external providers have been improved and the vocational offer has been extended to include new providers (eg the Donkey Sanctuary).
- Twilight sessions are offered for pupils to assist with GCSE work.
- Core subjects and vocational subjects are offered to Key Stage 4 pupils and a hairdressing training salon has been established at Palace Court.
- The service has registered as a City and Guilds Assessor.
- A motor cycle mechanics workshop has been established.
- The offer to students includes ASDAN (Award Scheme Development and Accreditation Network) and COPE (Certificate of Personal Effectiveness) awards, catering courses and mentoring to avoid NEET (Not in Education, Employment or Training).
- Taster days at college/university and Connexions clinics are available to secondary age pupils.
- Pupils have assisted in the design of the ACE website which will go live in March 2011.
- Wider academic offer to include vocational qualification and pathways (mechanics, construction, art and child development).

##### 2d. Increased Community Engagement

- The service is much more active in community projects and students were actively involved in the recent Anti-Bullying Week performing a dance/rap routine, which students themselves had written, in Drakes Circus.
- Pupils have worked in the following community projects:

- Shekinah Mission – pupils attend a range of outreach projects to support and engage within the community.
- Won first prize 'Plymouth in Pictures' by KS3.
- Community project with local primary school; dance display, building outside benches, community garden by KS3
- The service has worked with charities including Help for Heroes and is participating in the British Council Partnership and the Prince's Trust Project for Bretonside Park.

2e. More flexible working in partnership with schools and other agencies

- Strong relationships have been established with partners in the Youth Offending Service and the Child Health Service.
- Relationships with partners in mainstream schools have been further strengthened by a more flexible approach and a new offer of packages designed around the needs of individual pupils. Increased capacity for early intervention to schools – since September 2010 the service has worked with more than a dozen schools in successfully halting the decision to exclude pupils by offering early intervention.
- Six week respite and reintegration packages are offered to schools with ACE staff working in partnership with mainstream colleagues to ensure successful reintegration.
- A rewards scheme has been established and, in partnership with other schools, students are taking part in sports competitions.
- Formation of KSI nurture and intervention programme.
- Greater use of the CAF (Common Assessment Framework).

2f. Increased focus on emotional wellbeing

- Baseline assessment and an emotional resilience assessment are carried out on all pupils entering the service and every child has weekly, timetabled emotional literacy lessons.
- Activities provide opportunities for growth eg participation in the ECO Schools award, Forest Rangers and outdoor learning including diving, sailing and co-steering.
- Therapeutic interventions such as drama and art therapy are available.
- Embed TAMHS (Targeted Mental Health in Schools) project as cross service provision.

2g. Improved pupil tracking systems

- Implemented new administration 'information passport' system for referral of pupils' provision across Plymouth City Council.
- Implemented web-based assessment monitoring system.

3. **Improvements for the Future**

- Continued improvement in attendance
- Improved attainment – vocational and academic
- Increased engagement in post-16 education and reduced NEETS.
- Increased reintegration into mainstream education
- Subject to Cabinet approval on 22 February 2011 - successful incorporation of Hospital School into the ACE Service.

## Children and Young People's Overview and Scrutiny Panel Work Programme 2010/11

Topics	J	J	A	S	O	N	D	J	F	M	A	M
<b>Commissioning, Policy and Performance</b>												
Joint Finance and Performance monitoring - Delivering growth - Raising Aspiration - Reducing Inequalities - Value for Communities	17			9	7 (P)	11		6	24		14 (P)	
Performance Review (including budget)					7							
<b>Learner and Family Support</b>												
Update on allocation of School Places		15										
CAMHS Strategy (written report)								6				
Children Services Locality Working						11		6				
School Transport				9				6				
Special Education Needs Statements								6				
Stability of Placements									24			
Bullying								6				

Topics	J	J	A	S	O	N	D	J	F	M	A	M
<b>Lifelong Learning</b>												
Visit to a primary and secondary school		15										
Employment for Young People (NEETs)												
Adult and community learning												
School Building/Capital Programme		15				11						
Primary School Attainment								6				
Pupil Referral Unit									24			
Post-16									24			
<b>Children's Social Care</b>												
OFSTED Announced Inspection - Action Plan				9								
Common Assessment Framework				9								
Youth Justice Action Plan						11						
<b>Children's Health</b>												
Prevalence of Chlamydia in under 25 year olds												
Emotional Health of Children								6				



Topics		J	J	A	S	O	N	D	J	F	M	A	M
<b>Task and Finish Groups</b>													
Task and Finish Group - Young Carers in Plymouth						15 & 28							
Task and Finish Group – Unaccompanied Asylum Seeking Young People in Care										3			
<b>Updates</b>													
Legislative Changes			15		9		11		6	24			
Quarterly Scrutiny Reports					9				6				
Update from Children's Trust					9		11		6	24			
Update from Corporate Parenting Group	Recruitment and Retention of Foster Carers				9		11		6	24			
Update from Local Safeguarding Children's Board					9		11		6	24			
Update from relevant LSP Theme Groups					9		11		6	24			
<b>Strategies and Plans</b>													
Children and Young People's Plan										24			
<b>Training and Development</b>													
Eperform Training													
Development Session for panel members						7							

Key:

New Item

This page is intentionally left blank